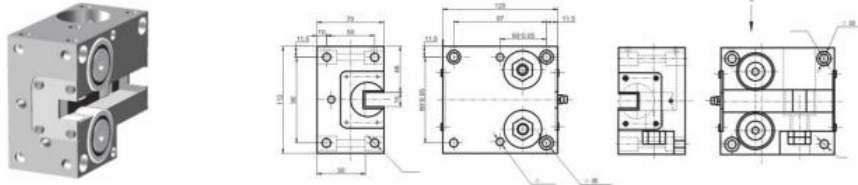
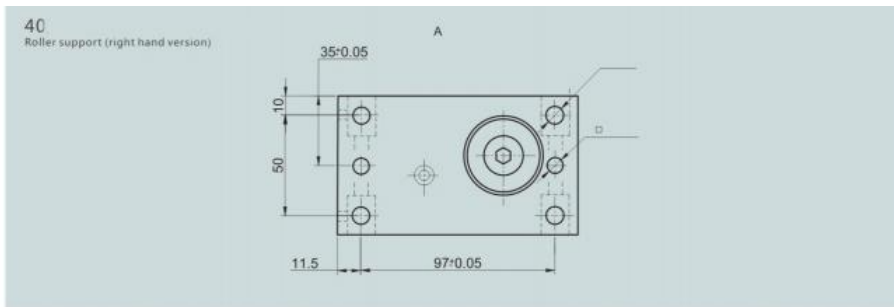


# ① Type 40 Roller Set

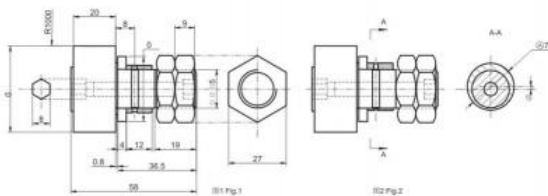


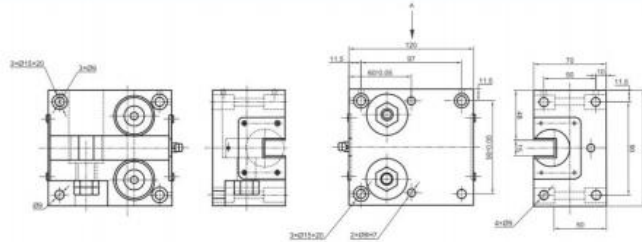
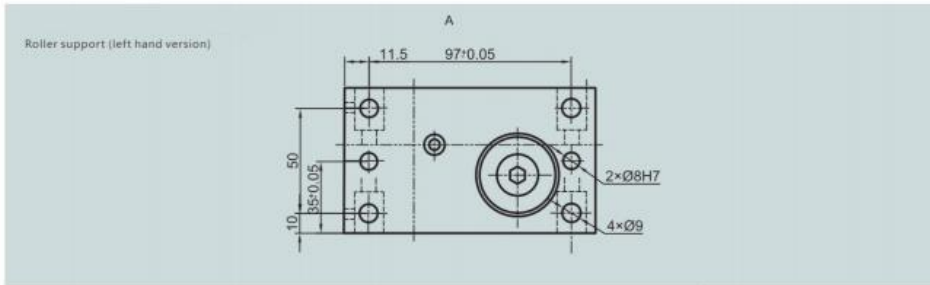
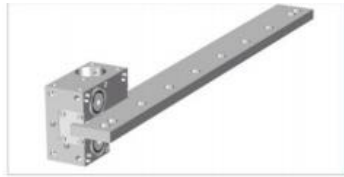
Code	①	②	③	M (kg)	C <sub>0W</sub> (N)	C <sub>0W</sub> <sup>①</sup> (N)	C <sub>0W</sub> <sup>②</sup> (N)	N <sub>max</sub> (min <sup>-1</sup> )
VGL40.1R	GBR	GBR	GBR	2.5	13800	7000	1800	5000
VGL40.2R	GBR	GBR	GBR	2.5	13800	7000	1800	5000
VGL40.3R	GBR	GBR	GBR	2.5	13800	7000	1800	5000

CW<sup>①</sup> : Normal service life 10<sup>6</sup>m CW<sup>②</sup> : Normal service life 10<sup>6</sup>m

## Stud roller

Code	Fig	Excenter (mm)	Weight (kg)	MA (Nm)
SVL40	1	-	0.25	87
SVL40	2	1	0.25	87





Code	①	②	③	M (kg)	C <sub>w</sub> <sup>①</sup> (N)	C <sub>w</sub> <sup>②</sup> (N)	C <sub>w</sub> <sup>③</sup> (N)	N <sub>max</sub> (min <sup>-1</sup> )
VGL40.1L	GBR	GBR	GBR	2.5	13800	7000	1800	5000
VGL40.2L	GBR	GBR	GBR	2.5	13800	7000	1800	5000
VGL40.3L	GBR	GBR	GBR	2.5	13800	7000	1800	5000

CW<sup>①</sup> : Normal service life 10<sup>6</sup>m CW<sup>②</sup> : Normal service life 10<sup>6</sup>m

Accessories

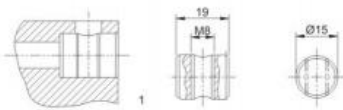
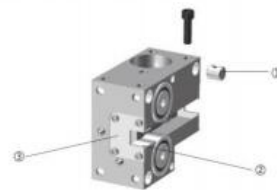
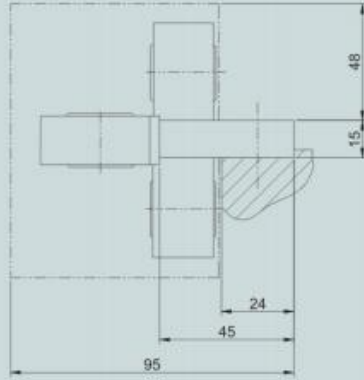


Fig	Material	Weight (kg)
①	C45	0.01
②	Felt	
③	Q345B	



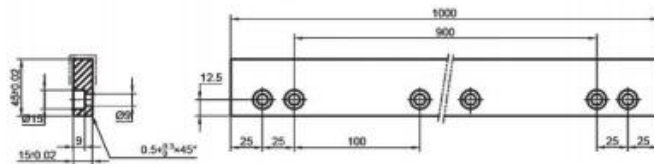
40 guideway flat rail mounting dimensions



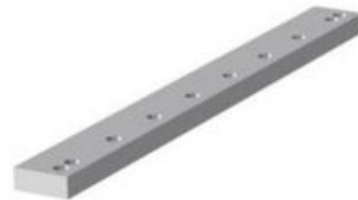
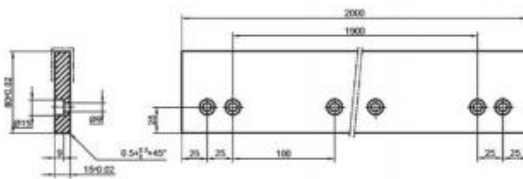
40 Guideway flat rail



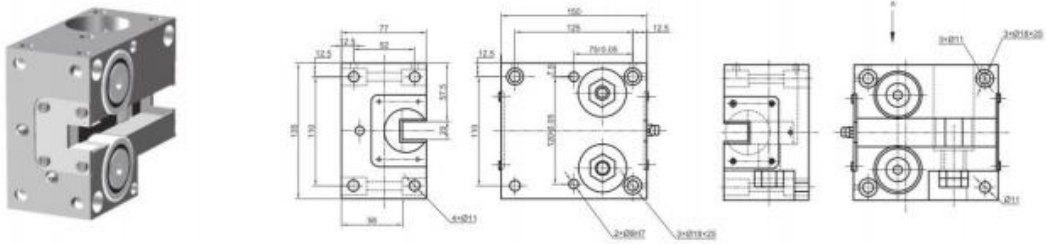
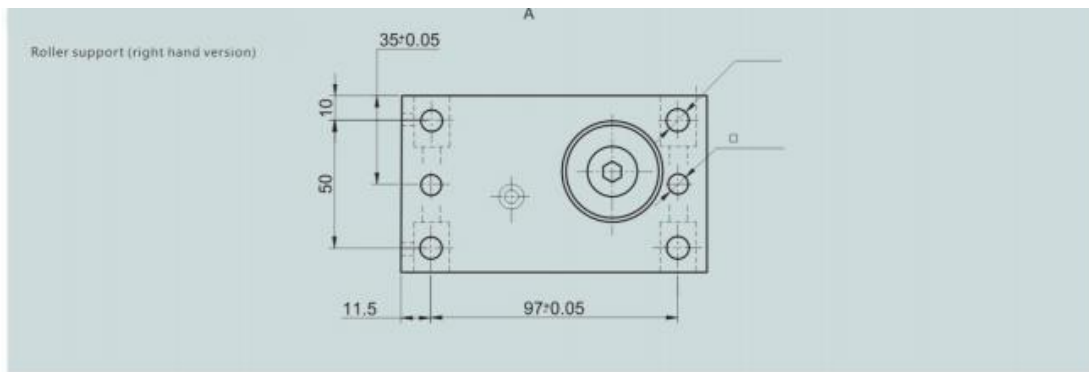
Code	L	L1	Material	Bolt size
VGD40101	1000	900	SCM440	M8×20 8.8



Code	L	L1	Material	Bolt size
VGD40202	2000	1900	SCM440	M8×20 8.8



## ②Type 52 Roller Set

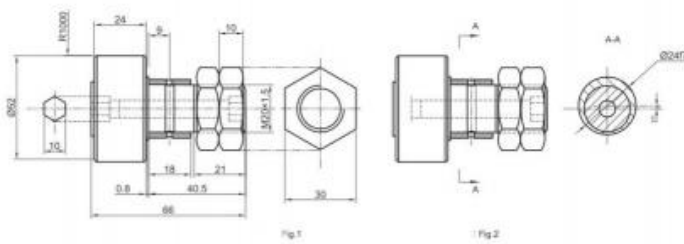


Code	①	②	③	M (kg)	$C_{0W}$ (N)	$C_W^{①}$ (N)	$C_W^{②}$ (N)	$N_{max}$ ( $min^{-1}$ )
VGL52.1R	GBR	GBR	GBR	4	28000	14000	3500	3800
VGL52.2R	GBR	GBR	GBR	4	28000	14000	3500	3800
VGL52.3R	GBR	GBR	GBR	4	28000	14000	3500	3800

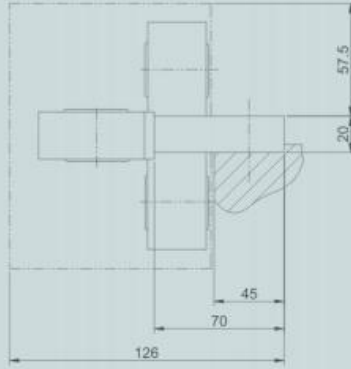
$CW^{①}$  : Normal service life  $10^6$ m     $CW^{②}$  : Normal service life  $10^8$ m

### Stud roller

Code	Fig	Excenter (mm)	Weight (kg)	MA (Nm)
SVL52	1	-	0.47	120
SVL52	2	1	0.47	120

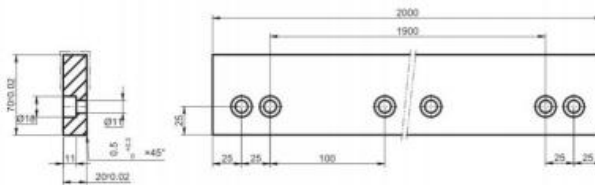
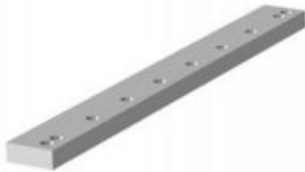


52 guideway flat rail mounting dimensions

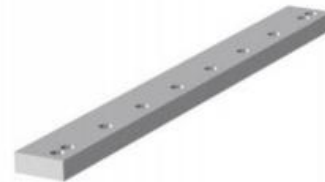
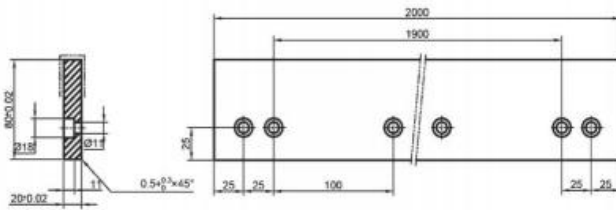


52 Guideway flat rail

Code	L	L1	Material	Bolt size
VGD52101	2000	1900	SCM440	M10×25 8.8 級

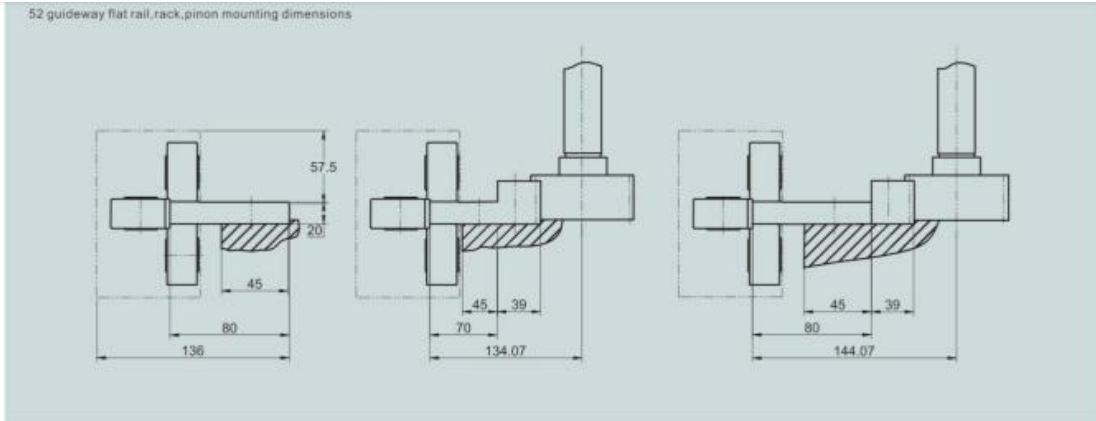


Code	L	L1	Material	Bolt size
VGD52202	2000	1900	SCM440	M10×25 8.8





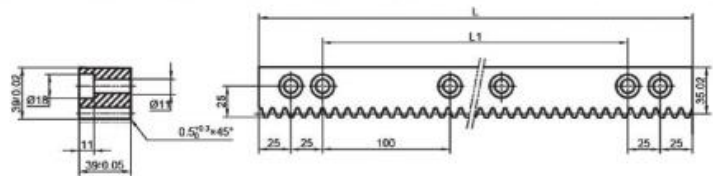
52 guideway flat rail, rack, pinon mounting dimensions



Rack



Code	L	L1	Module	P ( mm )	Material	Precision grade	Bolt size
VGES2129	1200	1100	3.9789	12.5	SCM440	DIN9	M10×40 8.8
VGES2209	2000	1900	3.9789	12.5	SCM440	DIN9	M10×40 8.8



Drive pinion

Code	Z	Module	P	Fig.	Precision grade	Weight KG
CLGR52-PE10	14	3.9789	12.5	1	DIN6	5.0
CLCR52-PE10	20	3.9789	12.5	2	DIN6	1.8

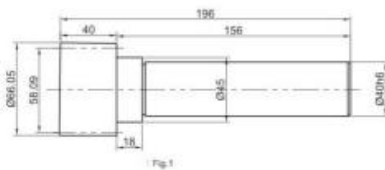


Fig 1

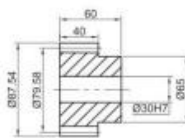


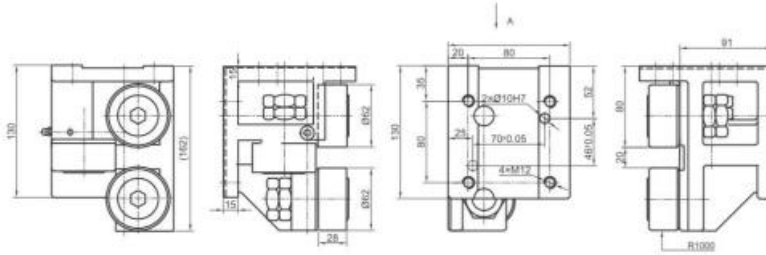
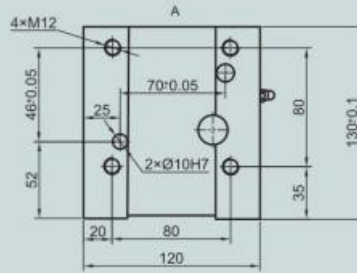
Fig 2







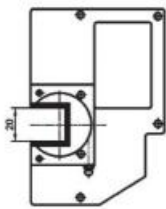
Roller support (left hand version)



Code	①	②	③	M (kg)	C <sub>0w</sub> (N)	C <sub>w</sub> <sup>10</sup> (N)	C <sub>w</sub> <sup>100</sup> (N)	N <sub>max</sub> (min <sup>-1</sup> )
VGL62.1L	GBR	GBR	GBR	7	39500	21400	5400	2200
VGL62.2L	GBR	GBR	GBR	7	39500	21400	5400	2200
VGL62.3L	GBR	GBR	GBR	7	39500	21400	5400	2200

CW<sup>10</sup> : Normal service life 10<sup>6</sup>m CW<sup>100</sup> : Normal service life 10<sup>8</sup>m

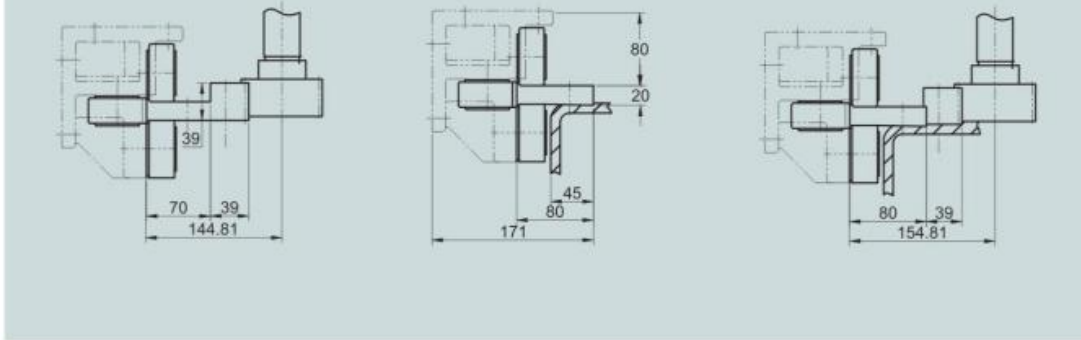
Accessories



Code	Weight (kg)
VG62R	0.3
VG62L	0.3



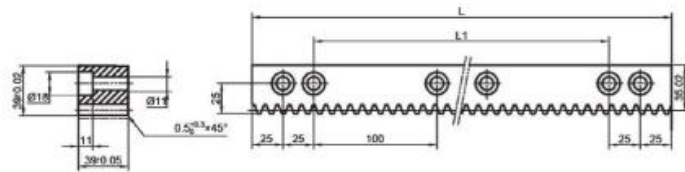
62 guideway flat rail, rack, pinion mounting dimensions



Rack

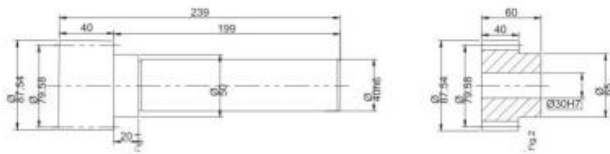


Code	L	L1	Module	P (mm)	Material	Precision grade	Bolt size
VGE62129	1200	1100	3.9789	12.5	SCM440	DIN9	M10×45 8.8
VGE62209	2000	1900	3.9789	12.5	SCM440	DIN9	M10×45 8.8

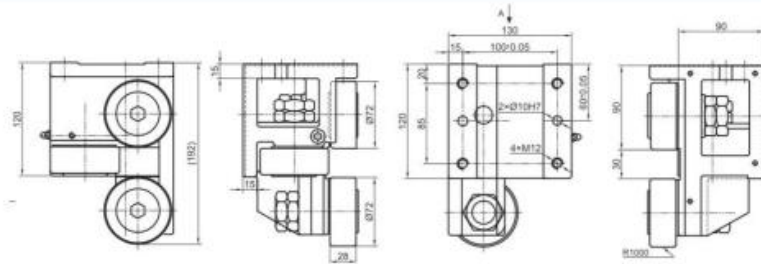
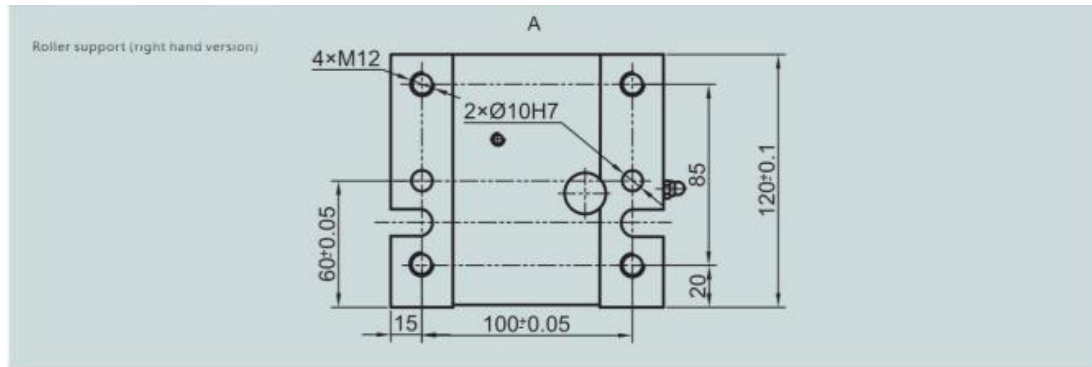


Drive pinion

Code	Z	Module	P	Fig.	Precision grade	Weight KG
CLGR62-PE10	20	3.9789	12.5	1	DIN6	6.0
CLCR62-PE10	20	3.9789	12.5	2	DIN6	1.8



#### ④ Type 72 Roller Set

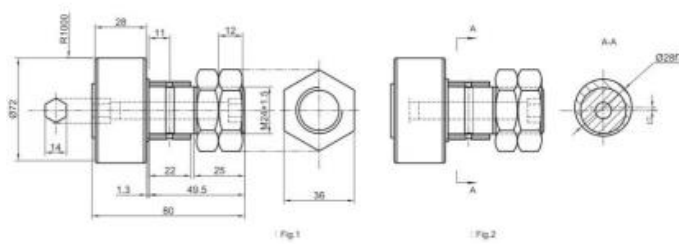


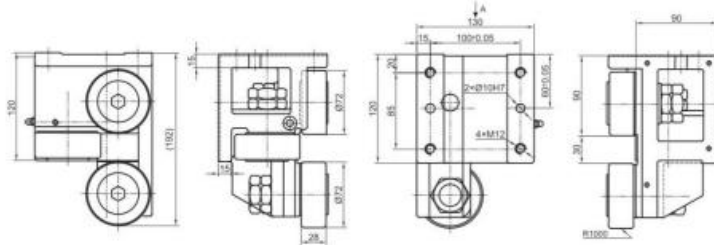
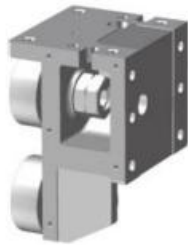
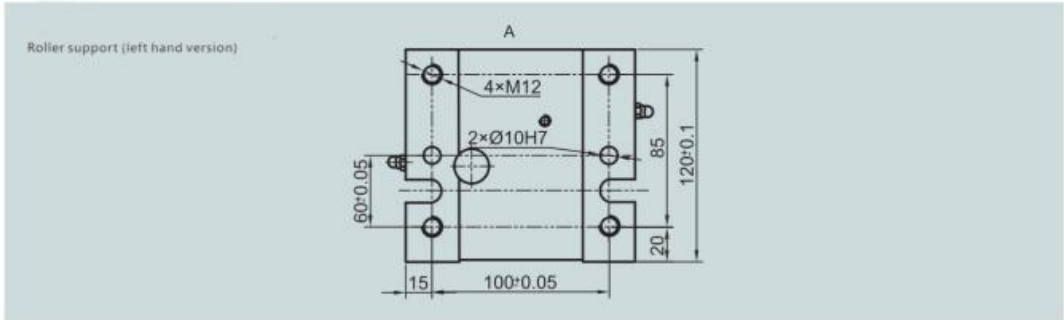
Code	①	②	③	M (kg)	$C_{0W}$ (N)	$C_W^{10^6}$ (N)	$C_W^{10^5}$ (N)	$N_{max}$ ( $min^{-1}$ )
VGL72.1R	GBR	GBR	GBR	9	46500	24600	6200	2200
VGL72.2R	GBR	GBR	GBR	9	46500	24600	6200	2200
VGL72.3R	GBR	GBR	GBR	9	46500	24600	6200	2200

$C_W^{10^6}$  : Normal service life  $10^6m$      $C_W^{10^5}$  : Normal service life  $10^5m$

#### Stud roller

Code	Fig	Excenter (mm)	Weight (kg)	MA (Nm)
SVL72	1	-	1.05	220
SVL72	2	1	1.05	220

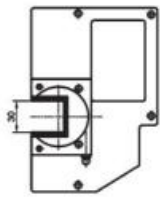




Code	①	②	③	M (kg)	$C_{20W}$ (N)	$C_W^{10^6}$ (N)	$C_W^{10^8}$ (N)	$N_{max}$ (min <sup>-1</sup> )
VGL72.1L	GBR	GBR	GBR	9	46500	24600	6200	2200
VGL72.2L	GBR	GBR	GBR	9	46500	24600	6200	2200
VGL72.3L	GBR	GBR	GBR	9	46500	24600	6200	2200

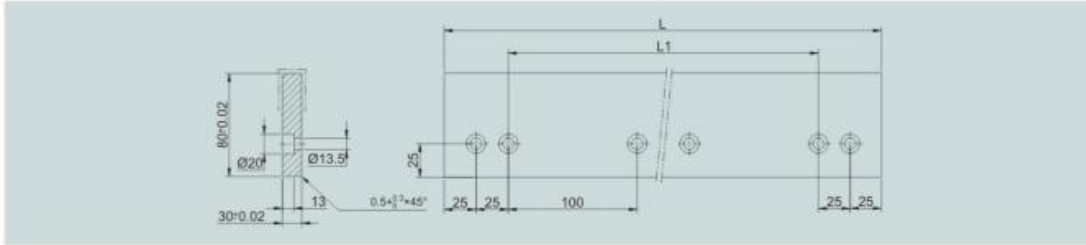
$C_W^{10^6}$  : Normal service life 10<sup>6</sup>m       $C_W^{10^8}$  : Normal service life 10<sup>8</sup>m

Accessories

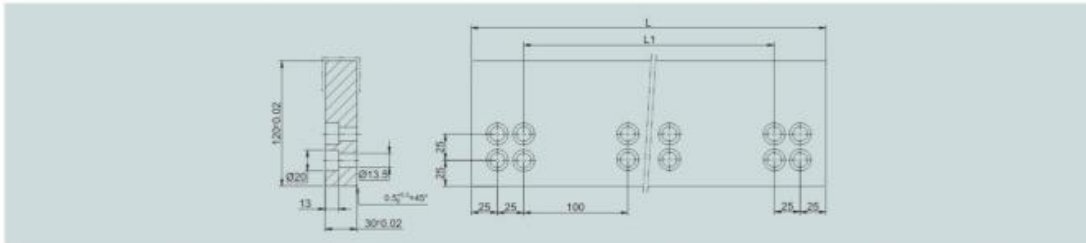


Code	Weight (kg)
VG72R	0.3
VG72L	0.3



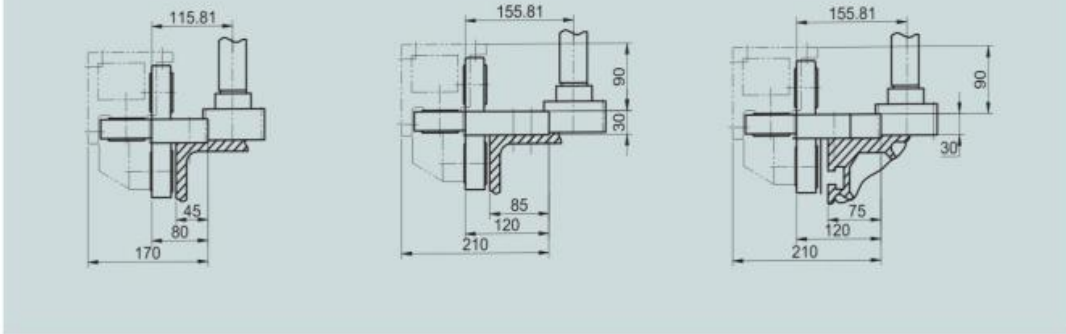


Code	L	L1	材料 Material	Bolt size
VG72101	800	700	SCM440	M12×35 8.8
VG72121	1200	1100	SCM440	M12×35 8.8
VG72201	2000	1900	SCM440	M12×35 8.8



Code	L	L1	Material	Bolt size
VG72102	800	700	SCM440	M12×35 8.8
VG72122	1200	1100	SCM440	M12×35 8.8
VG72202	2000	1900	SCM440	M12×35 8.8

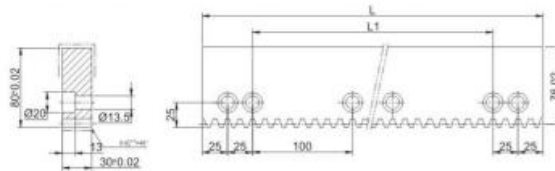
72 guideway flat rail,rack,pinon mounting dimensions



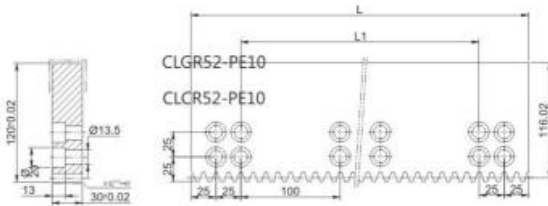
Guideway flat rail rack



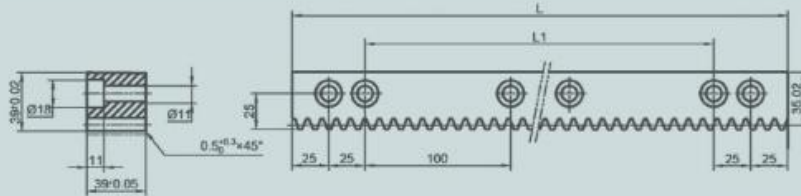
Code	L	L1	Module	$p$ ( mm )	Material	Precision grade	Bolt size
VGE720613	800	700	3.9789	12.5	SCM440	DIN9	M12×35 8.8
VGE720813	1200	1100	3.9789	12.5	SCM440	DIN9	M12×35 8.8
VGE721213	2000	1900	3.9789	12.5	SCM440	DIN9	M12×35 8.8



Code	L	L1	Module	$p$ ( mm )	Material	Precision grade	Bolt size
VGE720614	800	700	3.9789	12.5	SCM440	DIN9	M12×35 8.8
VGE720814	1200	1100	3.9789	12.5	SCM440	DIN9	M12×35 8.8
VGE721214	2000	1900	3.9789	12.5	SCM440	DIN9	M12×35 8.8

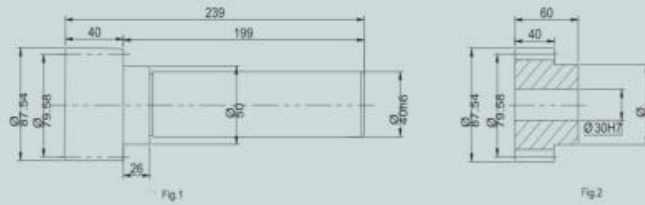


Rack



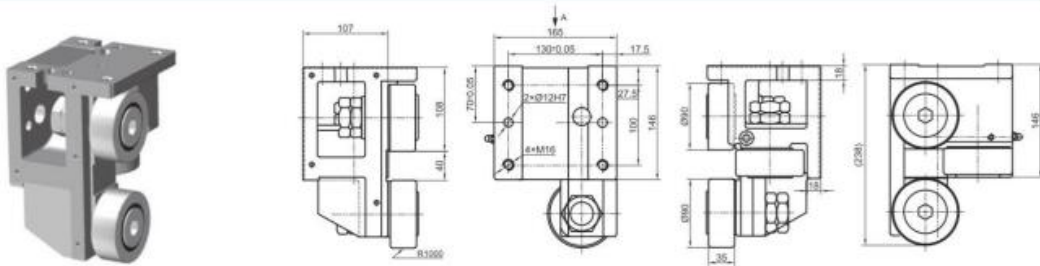
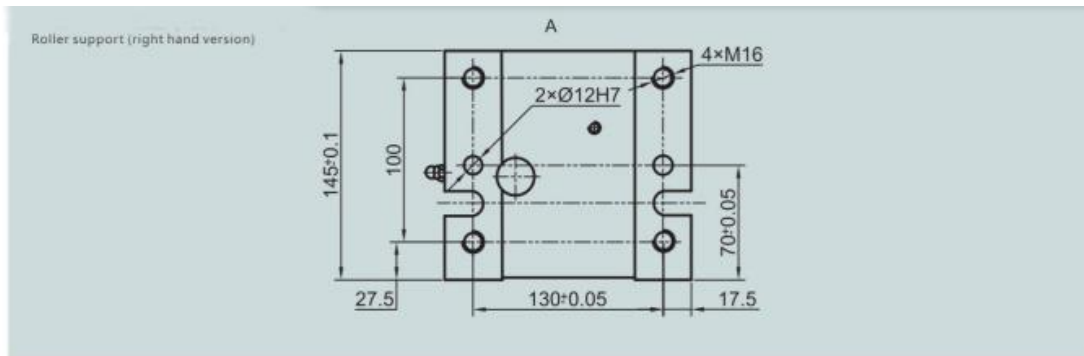
Code	L	L1	Module	P ( mm )	Material	Precision grade	Bolt size
VGS72129	1200	1100	3.9789	12.5	SCM440	DIN9	M10×45 8.8
VGS72209	2000	1900	3.9789	12.5	SCM440	DIN9	M10×45 8.8

Drive pinion



Code	Z	Module	P	Fig.	Precision grade	Weight KG
CLGR72-PE10	20	3.9789	12.5	1	DIN6	6.0
CLCR72-PE10	20	3.9789	12.5	2	DIN6	1.8

### ⑤ Type 90 Roller Set

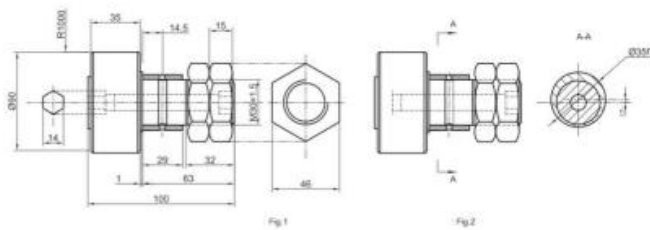


Code	①	②	③	M (kg)	C <sub>ow</sub> (N)	C <sub>w</sub> <sup>Ⓛ</sup> (N)	C <sub>w</sub> <sup>Ⓢ</sup> (N)	N <sub>max</sub> (min <sup>-1</sup> )
VGL90.1R	GBR	GBR	GBR	15	82000	43100	10800	1800
VGL90.2R	GBR	GBR	GBR	15	82000	43100	10800	1800
VGL90.3R	GBR	GBR	GBR	15	82000	43100	10800	1800

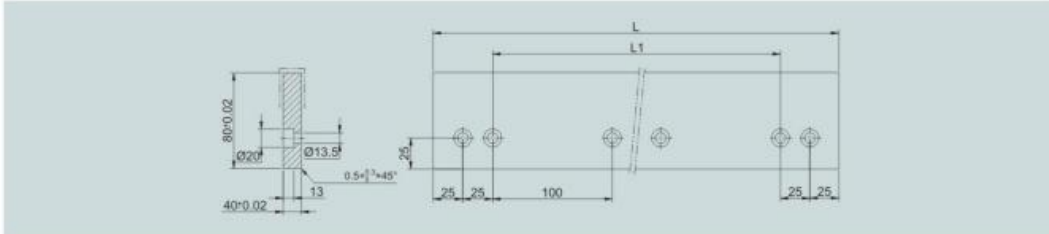
CW<sup>Ⓛ</sup> : Normal service life 10<sup>6</sup>m CW<sup>Ⓢ</sup> : Normal service life 10<sup>8</sup>m

### Stud roller

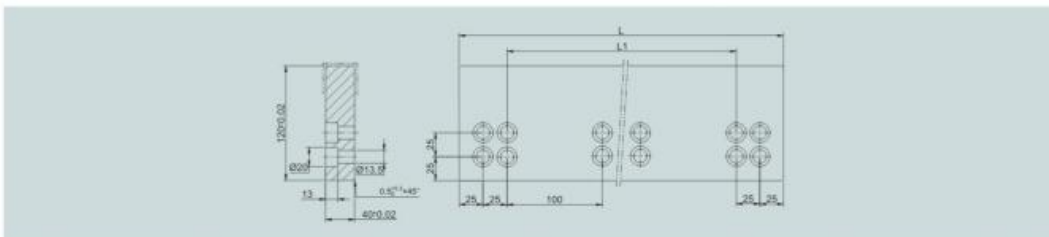
Code	Fig	Excenter (mm)	Weight (kg)	MA (Nm)
SVL90	1	-	2.02	450
SVL90	2	1	2.02	450





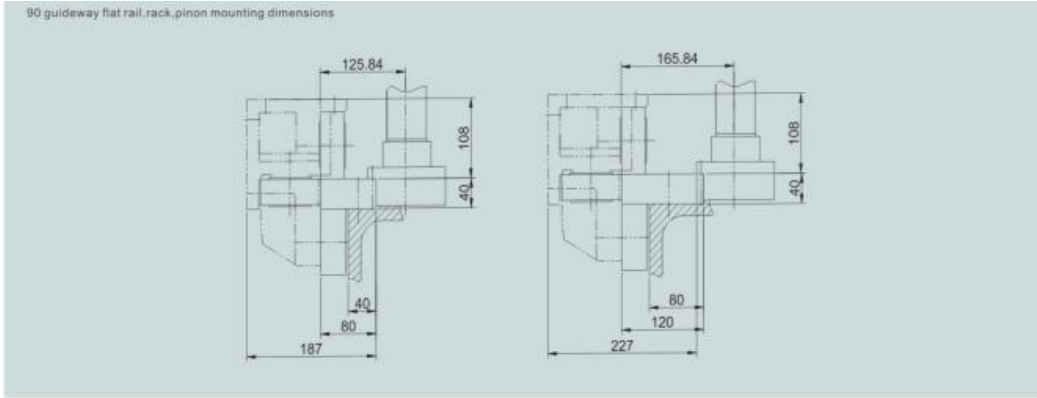


Code	L	L1	Material	Bolt size
VGD90101	800	700	SCM440	M12×45 8.8
VGD90121	1200	1100	SCM440	M12×45 8.8
VGD90201	2000	1900	SCM440	M12×45 8.8



Code	L	L1	Material	Bolt size
VGD90102	800	700	SCM440	M12×45 8.8
VGD90122	1200	1100	SCM440	M12×45 8.8
VGD90202	2000	1900	SCM440	M12×45 8.8

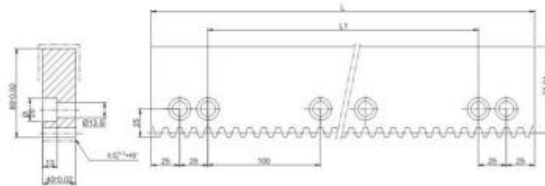
90 guideway flat rail rack, pinion mounting dimensions



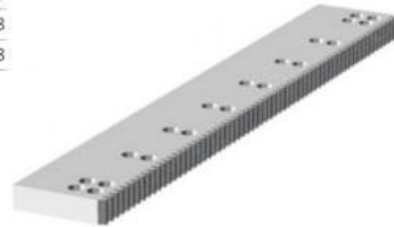
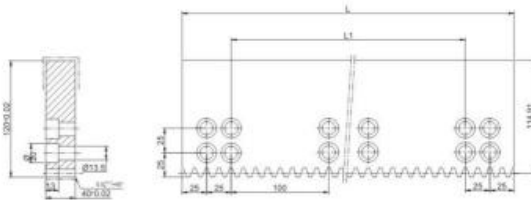
Guideway flat rail rack



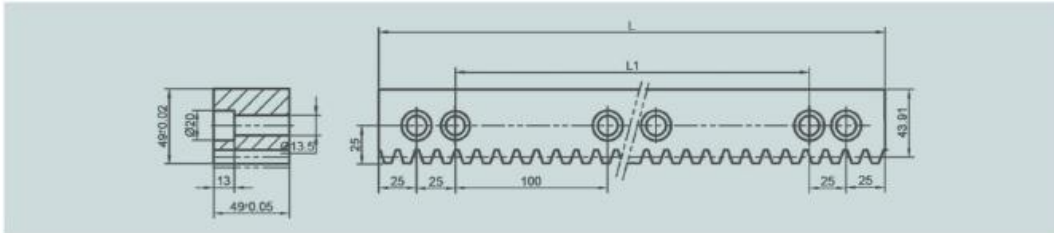
Code	L	L1	Module	P (mm)	Material	Precision grade	Bolt size
VGE900613	800	700	5.0930	16.0	SCM440	DIN9	M12×45 8.8
VGE900813	1200	1100	5.0930	16.0	SCM440	DIN9	M12×45 8.8
VGE901213	2000	1900	5.0930	16.0	SCM440	DIN9	M12×45 8.8



Code	L	L1	Module	P (mm)	Material	Precision grade	Bolt size
VGE900614	800	700	5.0930	16.0	SCM440	DIN9	M12×45 8.8
VGE900814	1200	1100	5.0930	16.0	SCM440	DIN9	M12×45 8.8
VGE901214	2000	1900	5.0930	16.0	SCM440	DIN9	M12×45 8.8

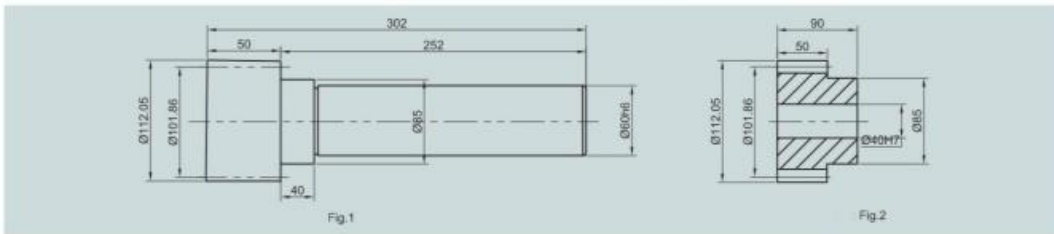


Rack



Code	L	L1	Module	P ( mm )	Material	Precision grade	Bolt size
VGS90129	1200	1100	5.093	16.0	SCM440	DIN9	M12×45 8.8
VGS90209	2000	1900	5.093	16.0	SCM440	DIN9	M12×45 8.8

Drive pinion



Code	Z	Module	P	Fig.	Precision grade	Weight KG
CLGR90-PE10	20	5.0930	16.0	1	DIN6	9
CLCR90-PE10	20	5.0930	16.0	2	DIN6	2.5